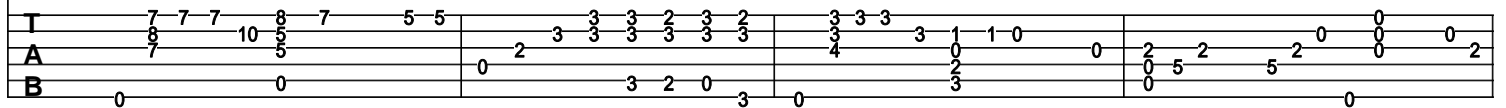
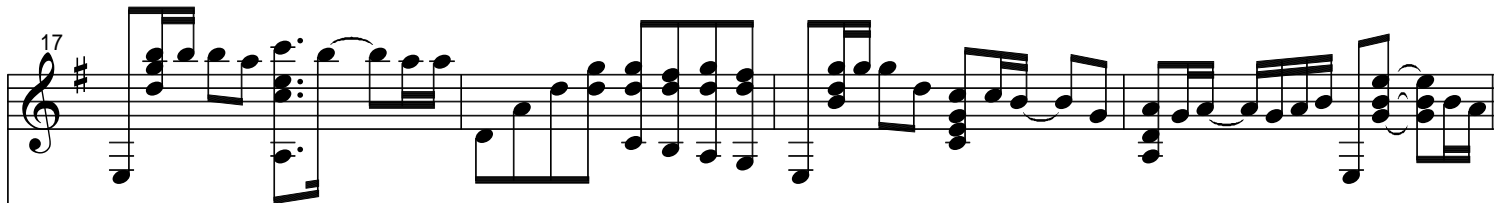
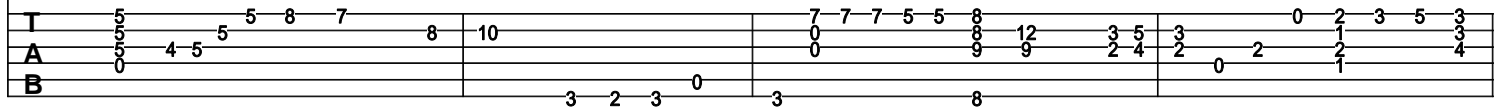
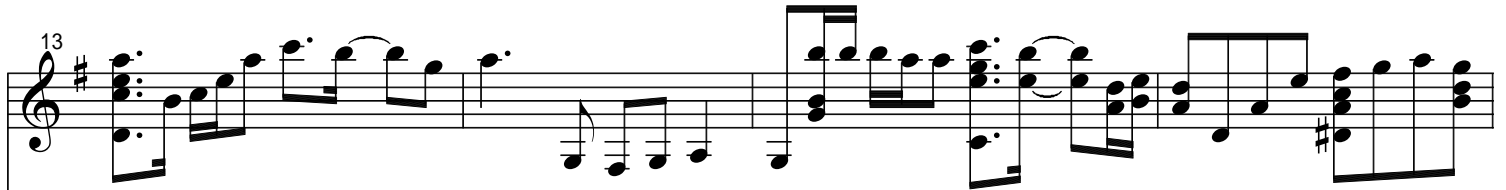
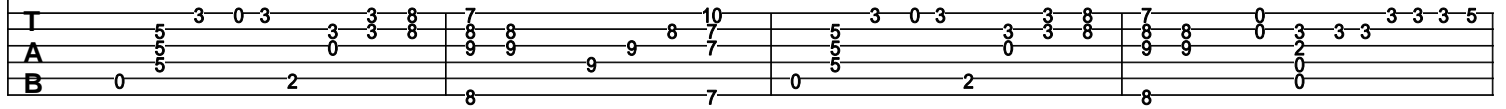
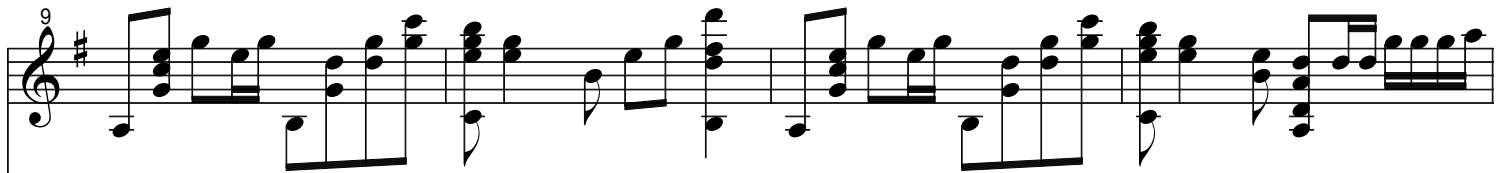
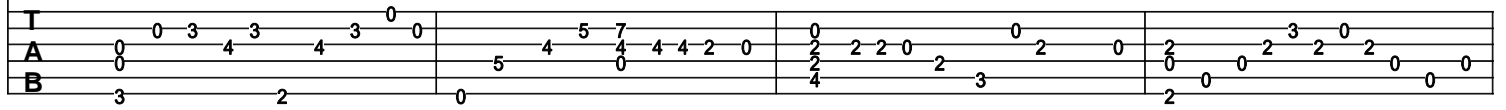


Little Bird



29

T
A
B

33

The image shows a musical score for the song 'The Rose Tree'. It consists of two staves. The top staff is a treble clef with a key signature of one sharp (F#). The melody is written in a simple, folk-like style. The bottom staff is a three-part vocal harmony for Tenor (T), Alto (A), and Bass (B). The notes are written in a simplified manner, often using numbers 0, 1, 2 to indicate fingerings or positions. The music is divided into four measures by vertical bar lines. The first measure starts with a treble clef and a sharp sign. The second measure has a key signature change to one flat (F). The third measure has a key signature change to one sharp (F#). The fourth measure has a key signature change to one flat (F). The score ends with a double bar line.

T
A
B